



PALUMBO

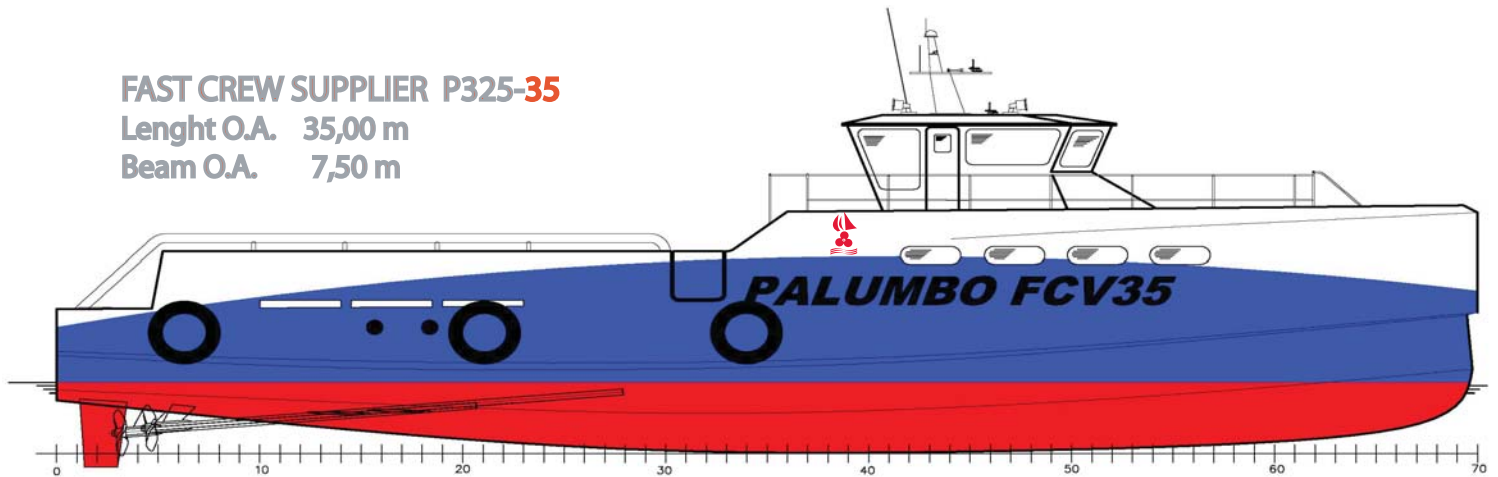
NAPLES MESSINA MALTA SHIPYARDS

Newbuilding Line **Fast Crew Supplier**

FAST CREW SUPPLIER P325-35

Lenght O.A. 35,00 m

Beam O.A. 7,50 m

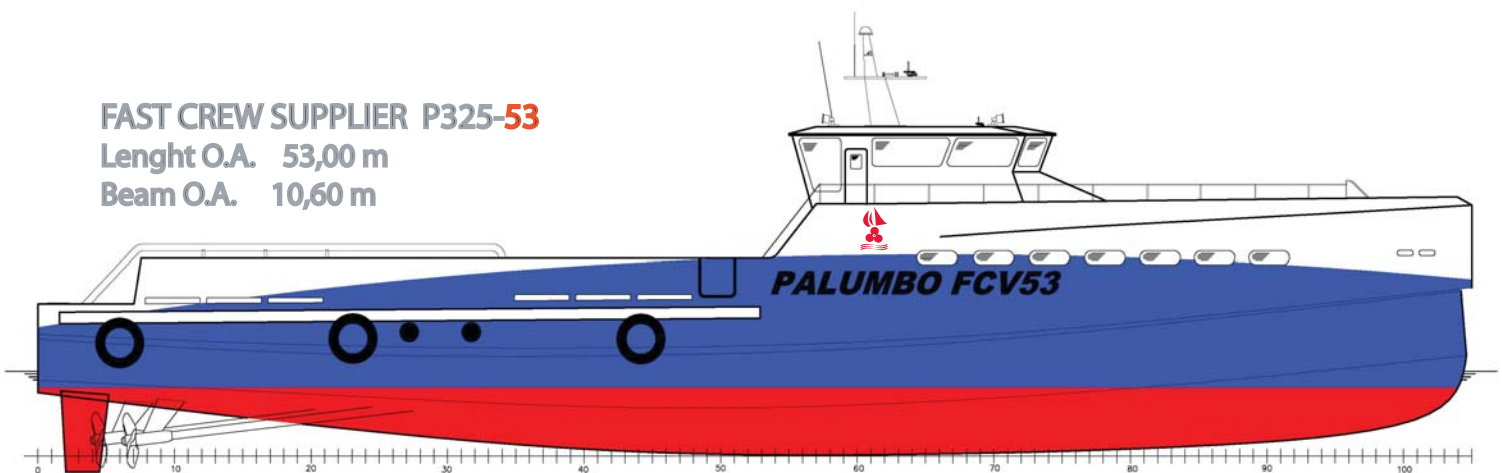


325-35

FAST CREW SUPPLIER P325-53

Lenght O.A. 53,00 m

Beam O.A. 10,60 m



325-53



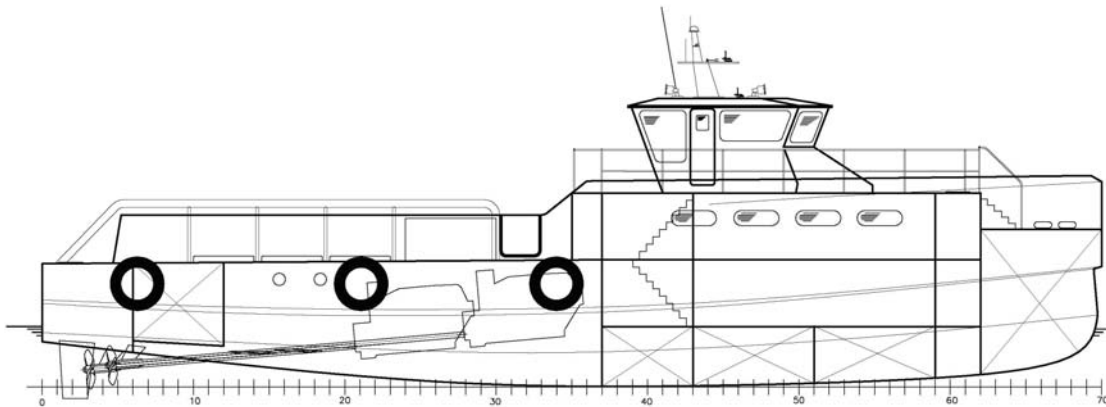
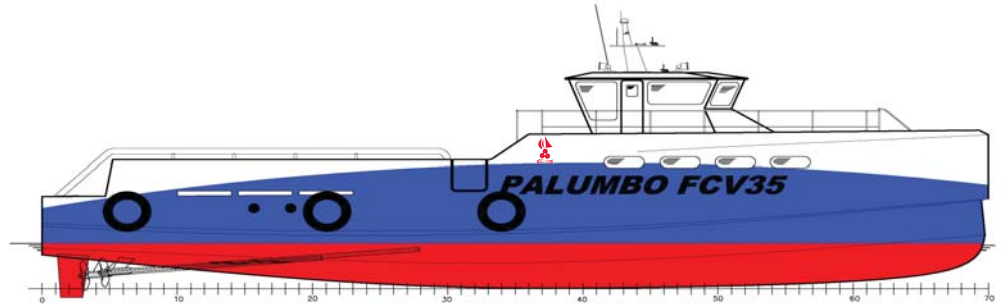
PALUMBO

Shipyards Since 1967

Web: www.palumbo.it - Email: sales.shipyard@palumbo.it

New Building FAST CREW SUPPLIER P325-35

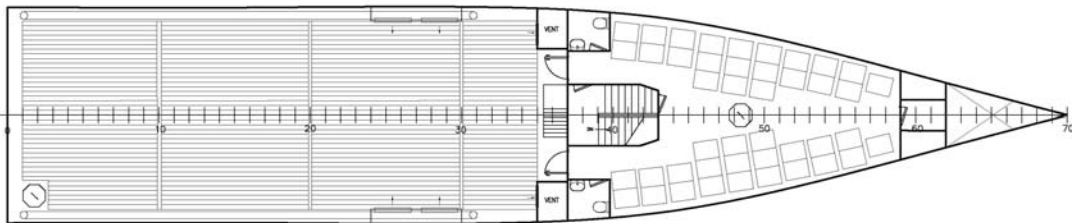
Lenght O.A.	35,00 m
Beam O.A.	7,50 m
Draft	2,00 m
Depth (at main Deck)	4,20 m
Material	Aluminium
Passengers	(Typical) 42 persons
Crew	(Typical) 6 persons
Crew Cabins	(Typical) 3x2 persons
Cargo Deck Area	105 sqm
Speed range	30 Kn
Main Engines	3 Caterpillar 3512 C, B rating
Total Power	5034 Kw at 1800 rpm
Propellers	3 fixed pitch propellers



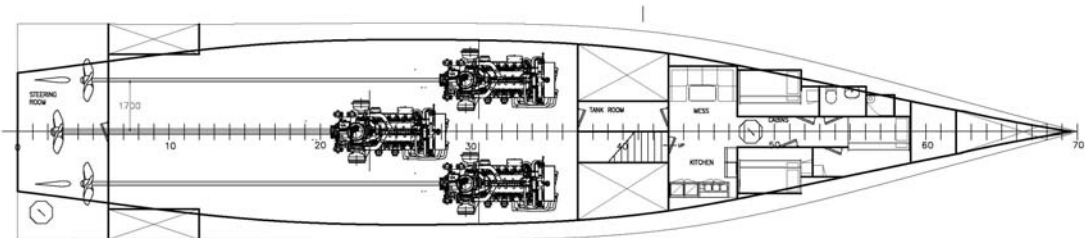
DECK 3
TOP DECK

DECK 2
MAIN DECK

DECK 1
TANK DECK



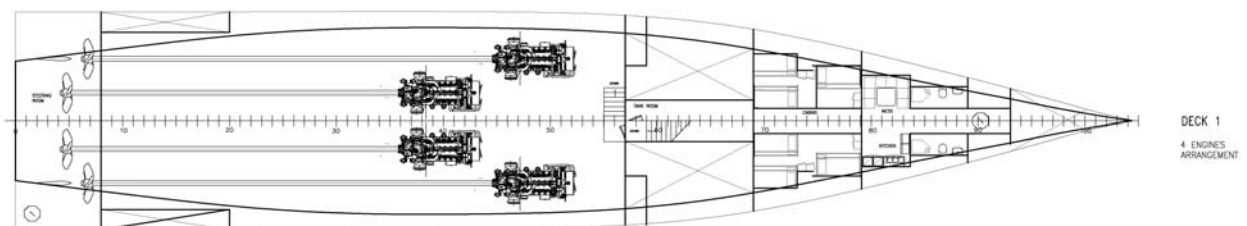
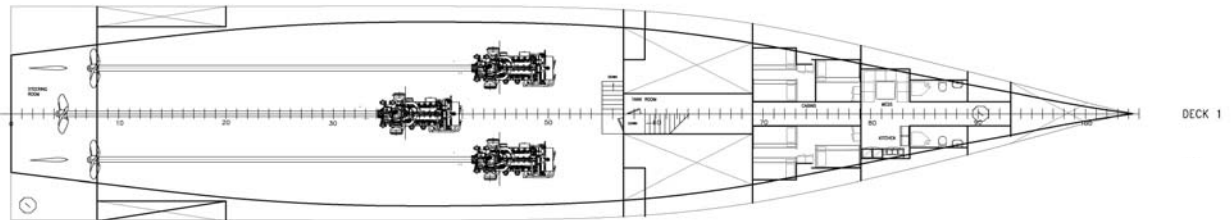
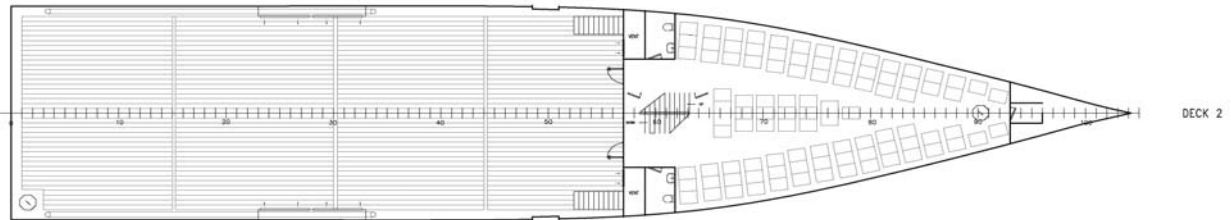
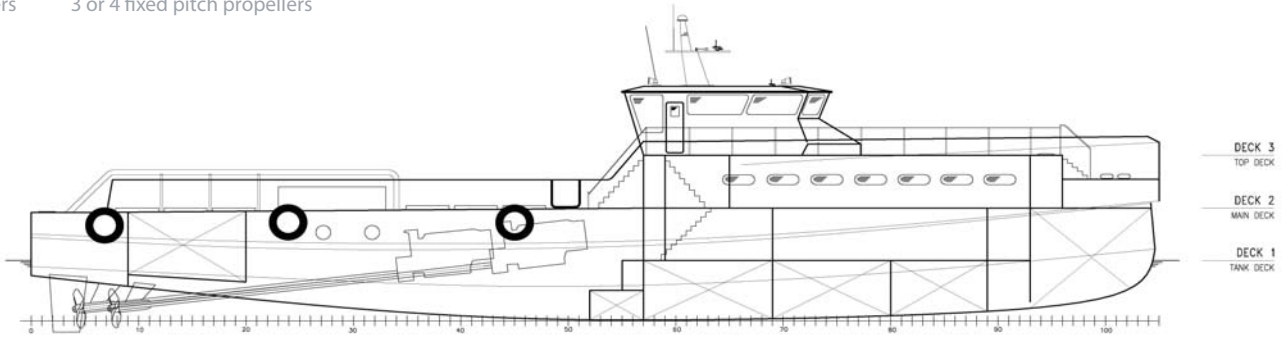
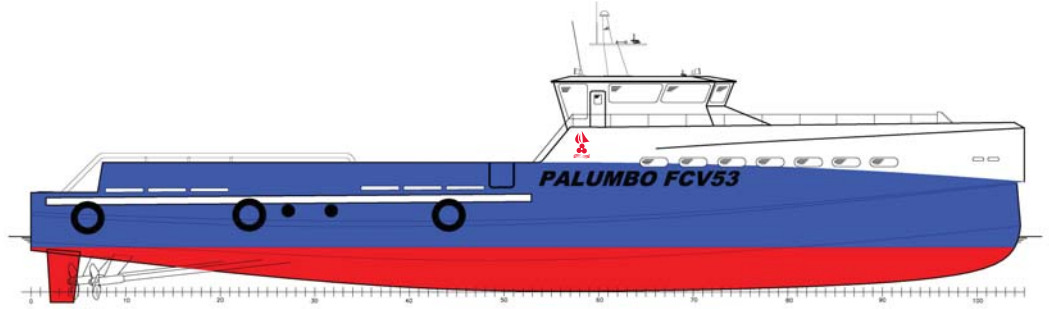
DECK 2



DECK 1

New Building FAST CREW SUPPLIER P325-53

Lenght O.A.	52,50 m
Beam O.A.	10,60 m
Draft	3,00 m
Depth (at main Deck)	5,60 m
Material	Aluminium or Steel
Passengers (Typical)	97 persons
Crew (Typical)	12 persons
Crew Cabins (Typical)	2x4 + 2x2 persons
Cargo Deck Area	260 sqm
Speed range	22-25 Kn
Main Engines	3 Caterpillar 3516 B, B rating or 4 Caterpillar 3512 C, B rating
Propellers	3 or 4 fixed pitch propellers





PALUMBO

NAPLES MESSINA MALTA SHIPYARDS

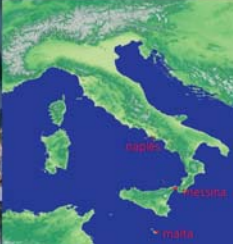
Since 1967



Shipyards Facilities Description

DOCK DIMENSIONS			
	LENGTH (M)	BREADTH (M)	DRAUGHT (M)
NAPLES - Palumbo Floating Dock	120	25	4,60
NAPLES - Esculona Floating Dock	75	14,75	4,30
MESSINA - Graving Dock nr.1	268	36 (38)	9,00
MESSINA - Slipways	185		
MSY - Graving Dock nr. 2	140	25	8,83
MSY - Graving Dock nr. 3	140	18	8,83
MALTA - Graving Dock nr. 4	262	40,0 (41,50)	8,53
MALTA - Graving Dock nr. 5	216	27,4 (31,40)	8,53
MALTA - Graving Dock nr. 6	362	62	9,14
MALTA - Graving Dock nr. 7	98	35	3,63
MALTA - Floating Dock nr. 8	40,24	12,5 (18)	2,77

YARD BERTH		BERTH LENGTH (M)	DOCK DRAUGHT (M)
NAPLES	(300+70+110+110+80+80) = 840		
MESSINA	(220+110) = 330		
MALTA	(460+85+101+95+124) = 865		
MSY	(122+118+137) = 377		



PALUMBO

Shipyards Since 1967

ISO 9001

BUREAU VERITAS
Certification



ISO 14001

BUREAU VERITAS
Certification



Web: www.palumbo.it - Email: sales.shipyard@palumbo.it